

Grinding wheel adapter

and
Accessories



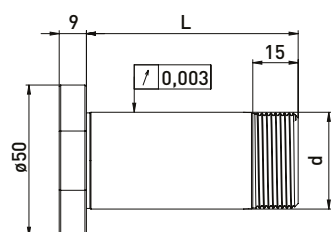
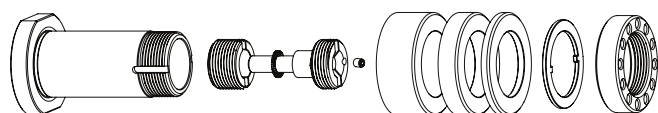
grinding deserves SOLUTIONS

GDS[®]
Made in Germany

ANCA Internal taper 30 // Shaft $\varnothing 32$ mm // RS $\varnothing 50$ mm

For ANCA tool grinding machines with ring set $\varnothing 50$ mm
with integrated clamping and press-off system (M8 bolt)

GWA Internal taper 30 // $\varnothing 32$ mm // RS $\varnothing 50$ mm



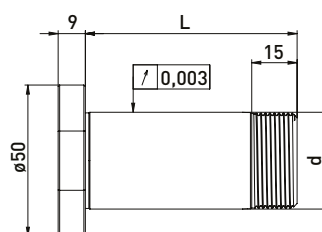
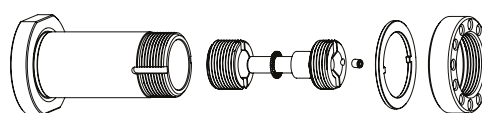
Delivered equipped:

Installation system, ring set $\varnothing 50$ mm, lock washer and clamping nut ANCA with balancing hole

Ring set $\varnothing 50$ mm

Order No.	Internal taper	d	L	B20	B10	B4
300020612	30	32	53	1	1	2
300020622	30	32	70	1	2	4
300020632	30	32	85	2	2	3
300020642	30	32	100	2	3	4

GWA Internal taper 30 // $\varnothing 32$ mm // without RS



Delivered equipped:

Installation system, lock washer and clamping nut ANCA with balancing hole

Order No.	Internal taper	d	L
300020611	30	32	53
300020621	30	32	70
300020631	30	32	85
300020641	30	32	100

ANCA grinding wheel adapter Internal taper 30 // Shaft $\varnothing 32$ mm // Ring set $\varnothing 50$ mm

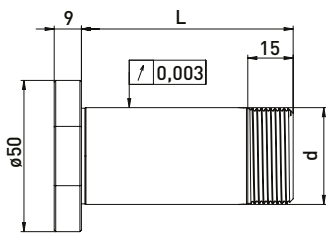
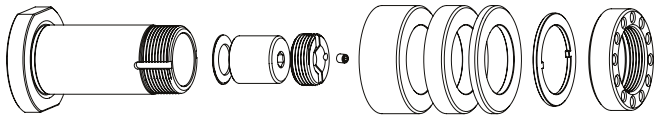
Order No.	Name	
350050010	Universal assembly device $\varnothing 50$	
350040030	Clamping nut wrench PC39 for ANCA nut	
350020102	ANCA installation system with M8 screw	
350060011	Assembly wrench set installation system ANCA (SW 6 + SW 2)	
750000001	Clamping wrench SW 6,0 x 150	
350020027	*Balancing weight pair for clamping nut $\varnothing 47$ // 70gmm	

Order No.	Name	
350011220	Spacer ring $\varnothing 50$ x $\varnothing 32$ x 20	
350011210	Spacer ring $\varnothing 50$ x $\varnothing 32$ x 10	
350011204	Spacer ring $\varnothing 50$ x $\varnothing 32$ x 4	
350030040	Lock washer $\varnothing 43$ x $\varnothing 32$ x 2	
350020050	Clamping nut ANCA balancing hole $\varnothing 47$ x 12 M31,5 x 1,5	
350020026	*Clamping nut with balancing option $\varnothing 47$ x 12 M31,5 x 1,5	

ANCA Internal taper 30 // Shaft $\varnothing 32$ mm // RS $\varnothing 50$ mm

For ANCA tool grinding machines with ring set $\varnothing 50$ mm
with integrated clamping and press-off system (M14 x 1.5 nut)

GWA Internal taper 30 // $\varnothing 32$ mm // RS $\varnothing 50$ mm



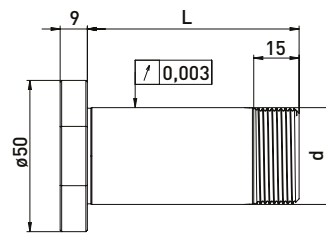
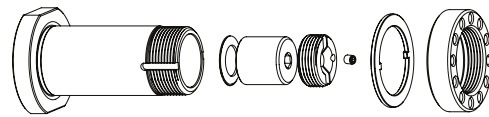
Delivered equipped:

Installation system, ring set $\varnothing 50$ mm, lock washer and clamping nut ANCA with balancing hole

Ring set $\varnothing 50$ mm

Order No.	Internal taper	d	L	B20	B10	B4
300020212	30	32	53	1	1	4
300020222	30	32	70	1	2	4
300020232	30	32	85	2	2	3
300020242	30	32	100	2	3	4

GWA Internal taper 30 // $\varnothing 32$ mm // without RS



Delivered equipped:

Installation system, lock washer and clamping nut ANCA with balancing hole

Order No.	Internal taper	d	L
300020211	30	32	53
300020221	30	32	70
300020231	30	32	85
300020241	30	32	100

Accessories ANCA grinding wheel adapter Internal taper 30 // Shaft $\varnothing 32$ mm // Ring set $\varnothing 50$ mm

Order No.	Name	
350050010	Universal assembly device $\varnothing 50$	
350040030	Clamping nut wrench PC39 for ANCA nut	
350020101	Installation system with M14 x 1.5 nut	
350060011	Assembly wrench set installation system ANCA (SW 6 + SW 2)	
750000001	Clamping wrench SW 6,0 x 150	
350020027	*Balancing weight pair for clamping nut $\varnothing 47$ // 70gmm	

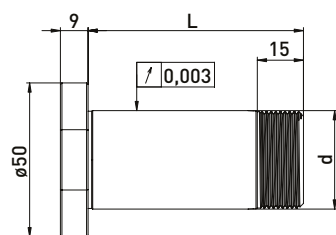
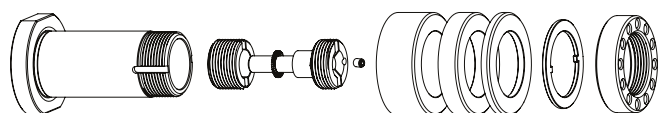
Order No.	Name	
350011220	Spacer ring $\varnothing 50$ x $\varnothing 32$ x 20	
350011210	Spacer ring $\varnothing 50$ x $\varnothing 32$ x 10	
350011204	Spacer ring $\varnothing 50$ x $\varnothing 32$ x 4	
350030040	Lock washer $\varnothing 43$ x $\varnothing 32$ x 2	
350020050	Clamping nut ANCA balancing hole $\varnothing 47$ x 12 M31,5 x 1,5	
350020026	*Clamping nut with balancing option $\varnothing 47$ x 12 M31,5 x 1,5	

*related items

ANCA Internal taper 30 // Shaft $\varnothing 31,75$ mm ($1\frac{1}{4}$) // RS $\varnothing 50$ mm

For ANCA tool grinding machines with ring set $\varnothing 50$ mm
with integrated clamping and press-off system (M8 bolt)

GWA Internal taper 30 // $\varnothing 31,75$ mm ($1\frac{1}{4}$) // RS $\varnothing 50$ mm



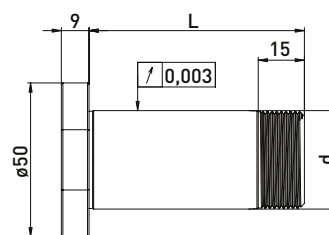
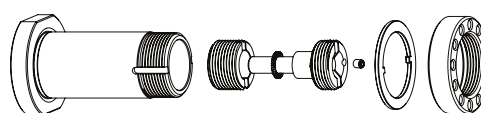
Delivered equipped:

Installation system, ring set $\varnothing 50$ mm, lock washer and clamping nut ANCA balancing hole

Ring set $\varnothing 50$ mm

Order No.	Internal taper	d	L	B 20	B 10	B 4
300020512	30	31,75	53	1	1	2
300020522	30	31,75	70	1	2	4
300020532	30	31,75	85	2	2	3
300020542	30	31,75	100	2	3	4

GWA Internal taper 30 // $\varnothing 31,75$ mm // without RS



Delivered equipped:

Installation system, lock washer and clamping nut ANCA balancing hole

Order No.	Internal taper	d	L
300020511	30	31,75	53
300020521	30	31,75	70
300020531	30	31,75	85
300020541	30	31,75	100

Accessories ANCA grinding wheel adapter Internal taper 30 // Shaft $\varnothing 31,75$ mm ($1\frac{1}{4}$) // Ring set $\varnothing 50$ mm

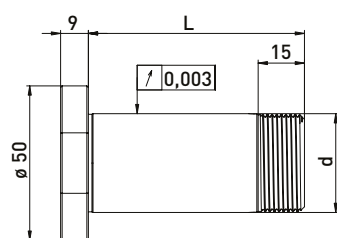
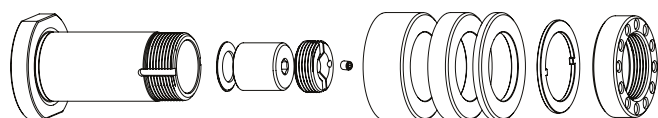
Order No.	Name	
350050010	Universal assembly device $\varnothing 50$	
350040030	Clamping nut wrench PC39 for ANCA nut	
350020102	ANCA installation system with M8 screw	
350060011	Assembly wrench set installation system ANCA (SW 6 + SW 2)	
750000001	Clamping wrench SW 6,0 x 150	
350020027	*Balancing weight pair for clamping nut $\varnothing 47$ // 70gmm	

Order No.	Name	
350011120	Spacer ring $\varnothing 50$ x $\varnothing 31,75$ x 20	
350011110	Spacer ring $\varnothing 50$ x $\varnothing 31,75$ x 10	
350011104	Spacer ring $\varnothing 50$ x $\varnothing 31,75$ x 4	
350030040	Lock washer $\varnothing 43$ x $\varnothing 32$ x 2	
350020050	Clamping nut ANCA balancing hole $\varnothing 47$ x 12 M31,5 x 1,5	
350020026	*Clamping nut with balancing option $\varnothing 47$ x 12 M31,5 x 1,5	

ANCA Internal taper 30 // Shaft $\varnothing 31,75$ mm ($1\frac{1}{4}$) // RS $\varnothing 50$ mm

For ANCA tool grinding machines with ring set $\varnothing 50$ mm
with integrated clamping and press-off system (M14 x 1.5 nut)

GWA Internal taper 30 // $\varnothing 31,75$ mm ($1\frac{1}{4}$) // RS $\varnothing 50$ mm



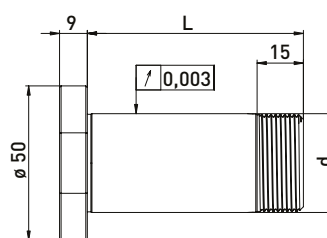
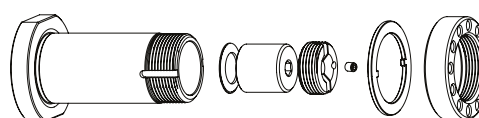
Delivered equipped:

Installation system, ring set $\varnothing 50$ mm, lock washer and clamping nut ANCA balancing hole

Ring set $\varnothing 50$ mm

Order No.	Internal taper	d	L	B20	B10	B4
300020112	30	31,75	53	1	1	2
300020122	30	31,75	70	1	2	4
300020132	30	31,75	85	2	2	3
300020142	30	31,75	100	2	3	4

GWA Internal taper 30 // $\varnothing 31,75$ mm // without RS



Delivered equipped:

Installation system, lock washer and clamping nut ANCA balancing hole

Order No.	Internal taper	d	L
300020111	30	31,75	53
300020121	30	31,75	70
300020131	30	31,75	85
300020141	30	31,75	100

Accessories ANCA grinding wheel adapter Internal taper 30 // Shaft $\varnothing 31,75$ mm ($1\frac{1}{4}$) // Ring set $\varnothing 50$ mm

Order No.	Name	
350050010	Universal assembly device $\varnothing 50$	
350040030	Clamping nut wrench PC39 for ANCA nut	
350020101	Installation system with M14 x 1.5 nut	
350060011	Assembly wrench set installation system ANCA (SW 6 + SW 2)	
750000001	Clamping wrench SW 6,0 x 150	
350020027	*Balancing weight pair for clamping nut $\varnothing 47$ // 70gmm	

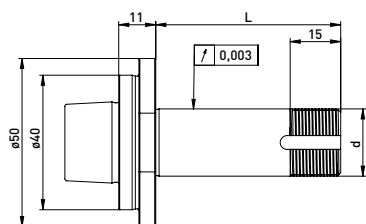
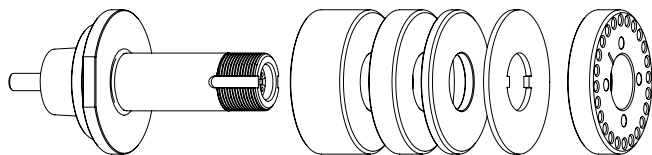
Order No.	Name	
350011120	Spacer ring $\varnothing 50$ x $\varnothing 31,75$ x 20	
350011110	Spacer ring $\varnothing 50$ x $\varnothing 31,75$ x 10	
350011104	Spacer ring $\varnothing 50$ x $\varnothing 31,75$ x 4	
350030040	Lock washer $\varnothing 43$ x $\varnothing 32$ x 2	
350020050	Clamping nut ANCA balancing hole $\varnothing 47$ x 12 M31,5 x 1,5	
350020026	*Clamping nut with balancing option $\varnothing 47$ x 12 M31,5 x 1,5	

*related items

ANCA manual HSK-F40 // Shaft $\varnothing 20$ mm // RS $\varnothing 50$ mm

For ANCA tool grinding machines with ring set $\varnothing 50$ mm
with integrated clamping and press-off system M6 clamping screw

GWA manual HSK-F40 // $\varnothing 20$ mm // RS $\varnothing 50$ mm



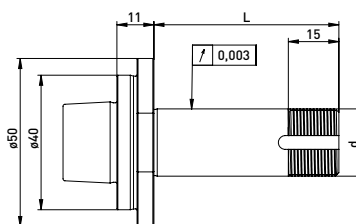
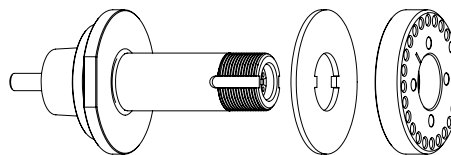
Delivered equipped:

Installation system, ring set $\varnothing 50$ mm, lock washer and clamping nut ANCA balancing hole

Ring set $\varnothing 50$ mm

Order No.	HSK	d	L	Ring set $\varnothing 50$ mm		
				B 20	B 10	B 4
300023012	HSK-F40	20	55	1	1	3
300023022	HSK-F40	20	72	2	1	2
300023032	HSK-F40	20	85	2	2	3
300023042	HSK-F40	20	95	3	1	3

GWA manual HSK-F40 // $\varnothing 20$ mm // without RS



Delivered equipped:

Installation system, lock washer and clamping nut ANCA balancing hole

Order No.	HSK	d	L
300023011	HSK-F40	20	55
300023021	HSK-F40	20	72
300023031	HSK-F40	20	85
300023041	HSK-F40	20	95

Accessories ANCA grinding wheel adapter manual HSK-F40 // Shaft $\varnothing 20$ mm // Ring set $\varnothing 50$ mm

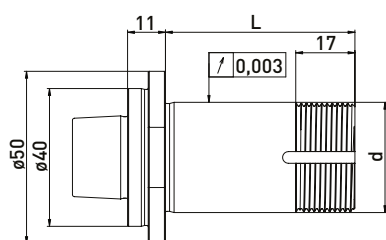
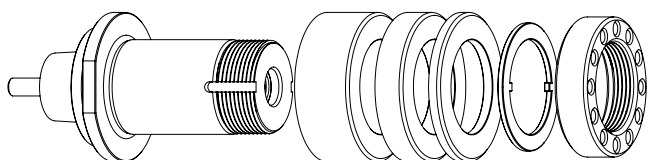
Order No.	Name	
350050050	Assembly device HSK40 $\varnothing 40$	
350040010	Clamping nut wrench PC27 for $\varnothing 20$	
350040011	Clamping nut wrench PC27 for $\varnothing 20$	

Order No.	Name	
350011020	Spacer ring $\varnothing 50 \times \varnothing 20 \times 20$	
350011010	Spacer ring $\varnothing 50 \times \varnothing 20 \times 10$	
350011004	Spacer ring $\varnothing 50 \times \varnothing 20 \times 4$	
350030010	Lock washer $\varnothing 50 \times \varnothing 20 \times 2$	
350020051	Clamping nut ANCA $\varnothing 50 \times 9,5$ M20 x 1	

ANCA manual HSK-F40 // Shaft $\varnothing 31,75$ mm (1¼) // RS $\varnothing 50$ mm

For ANCA tool grinding machines with ring set $\varnothing 50$ mm
with integrated clamping and press-off system M6 clamping screw

GWA manual HSK-F40 // $\varnothing 31,75$ mm (1¼) // RS $\varnothing 50$ mm



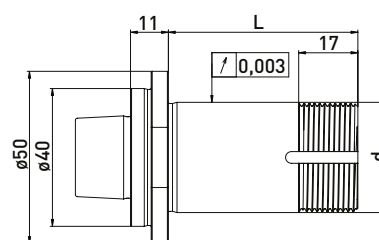
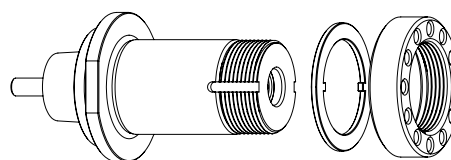
Delivered equipped:

Installation system, ring set $\varnothing 50$ mm, lock washer and clamping nut ANCA balancing hole

Ring set $\varnothing 50$ mm

Order No.	HSK	d	L	Ring set $\varnothing 50$ mm		
				B20	B10	B4
300023112	HSK-F40	31,75	55	1	1	3
300023122	HSK-F40	31,75	72	2	1	2
300023132	HSK-F40	31,75	85	2	2	3
300023142	HSK-F40	31,75	95	3	1	3

GWA manual HSK-F40 // $\varnothing 31,75$ mm // without RS



Delivered equipped:

Installation system, lock washer and clamping nut ANCA balancing hole

Order No.	HSK	d	L
300023111	HSK-F40	31,75	55
300023121	HSK-F40	31,75	72
300023131	HSK-F40	31,75	85
300023141	HSK-F40	31,75	95

Accessories ANCA grinding wheel adapter manual HSK-F40 // Shaft $\varnothing 31,75$ mm (1¼) // Ring set $\varnothing 50$ mm

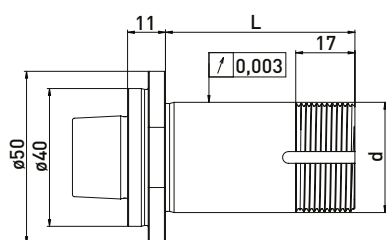
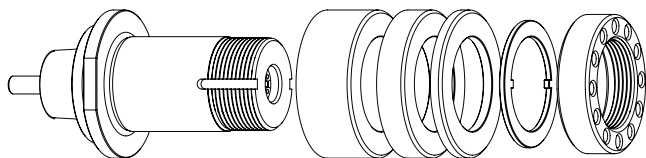
Order No.	Name	
350050050	Assembly device HSK40 $\varnothing 40$	
350040030	Clamping nut wrench PC39 for ANCA nut	
350020027	*Balancing weight pair for clamping nut $\varnothing 47$ // 70gmm	

Order No.	Name	
350011120	Spacer ring $\varnothing 50$ x $\varnothing 31,75$ x 20	
350011110	Spacer ring $\varnothing 50$ x $\varnothing 31,75$ x 10	
350011104	Spacer ring $\varnothing 50$ x $\varnothing 31,75$ x 4	
350030040	Lock washer $\varnothing 43$ x $\varnothing 32$ x 2	
350020050	Clamping nut ANCA balancing hole $\varnothing 47$ x 12 M31,5 x 1,5	
350020026	*Clamping nut with balancing option $\varnothing 47$ x 12 M31,5 x 1,5	

ANCA manual HSK-F40 // Shaft $\varnothing 32$ mm // RS $\varnothing 50$ mm

For ANCA tool grinding machines with ring set $\varnothing 50$ mm
with integrated clamping and press-off system M6 clamping screw

GWA manual HSK-F40 // $\varnothing 32$ mm // RS $\varnothing 50$ mm



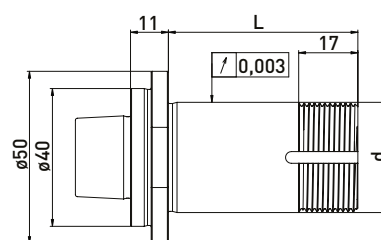
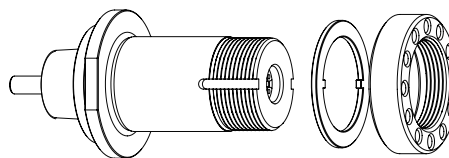
Delivered equipped:

Installation system, ring set $\varnothing 50$ mm, lock washer and clamping nut ANCA balancing hole

Ring set $\varnothing 50$ mm

Order No.	HSK	d	L	Ring set $\varnothing 50$ mm		
				B 20	B 10	B 4
300023212	HSK-F40	32	55	1	1	3
300023222	HSK-F40	32	72	2	1	2
300023232	HSK-F40	32	85	2	2	3
300023242	HSK-F40	32	95	3	1	3

GWA manual HSK-F40 // $\varnothing 32$ mm // without RS



Delivered equipped:

Installation system, lock washer and clamping nut ANCA balancing hole

Order No.	HSK	d	L
300023211	HSK-F40	32	55
300023221	HSK-F40	32	72
300023231	HSK-F40	32	85
300023241	HSK-F40	32	95

Accessories ANCA grinding wheel adapter manual HSK-F40 // Shaft $\varnothing 32$ mm // Ring set $\varnothing 50$ mm

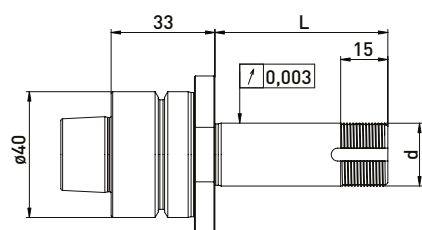
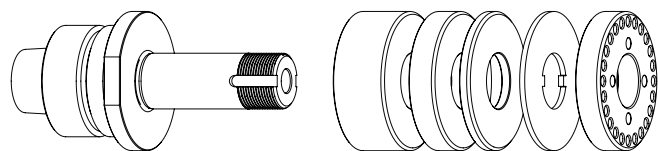
Order No.	Name	
350050050	Assembly device HSK40 $\varnothing 40$	
350040030	Clamping nut wrench PC39 for ANCA nut	
350020027	*Balancing weight pair for clamping nut $\varnothing 47$ // 70gmm	

Order No.	Name	
350011220	Spacer ring $\varnothing 50$ x $\varnothing 32$ x 20	
350011210	Spacer ring $\varnothing 50$ x $\varnothing 32$ x 10	
350011204	Spacer ring $\varnothing 50$ x $\varnothing 32$ x 4	
350030040	Lock washer $\varnothing 43$ x $\varnothing 32$ x 2	
350020050	Clamping nut ANCA balancing hole $\varnothing 47$ x 12 M31,5 x 1,5	
350020026	*Clamping nut with balancing option $\varnothing 47$ x 12 M31,5 x 1,5	

ANCA automatic HSK-F40 // Shaft $\varnothing 20$ mm // RS $\varnothing 50$ mm

For ANCA tool grinding machines with ring set $\varnothing 50$ mm

GWA manual HSK-F40 // $\varnothing 20$ mm // RS $\varnothing 50$ mm



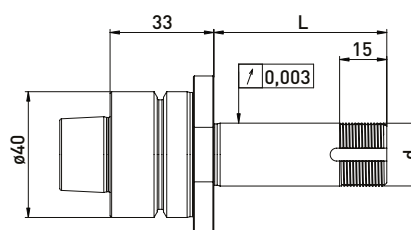
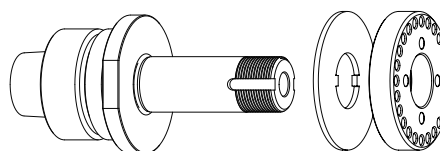
Delivered equipped:

Ring set $\varnothing 50$ mm, lock washer and clamping nut ANCA with balancing hole

Ring set $\varnothing 50$ mm

Order No.	HSK	d	L	B 20	B 10	B 4
300025012	HSK-F40	20	55	1	1	3
300025022	HSK-F40	20	72	2	1	2
300025032	HSK-F40	20	85	2	2	3
300025042	HSK-F40	20	95	3	1	3

GWA manual HSK-F40 // $\varnothing 20$ mm // without RS



Delivered equipped:

Lock washer and clamping nut ANCA with balancing hole

Order No.	HSK	d	L
300025011	HSK-F40	20	55
300025021	HSK-F40	20	72
300025031	HSK-F40	20	85
300025041	HSK-F40	20	95

Accessories ANCA grinding wheel adapter manual HSK-F40 // Shaft $\varnothing 20$ mm // Ring set $\varnothing 50$ mm

Order No.	Name	
350050050	Assembly device HSK40 $\varnothing 40$	
350040010	*Clamping nut wrench PC27 for $\varnothing 20$	
350040011	*Clamping nut wrench PC27 for $\varnothing 20$	
350020021	*Balancing weight pair for clamping nut $\varnothing 50$ // 100gmm	

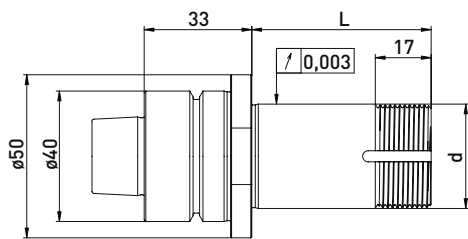
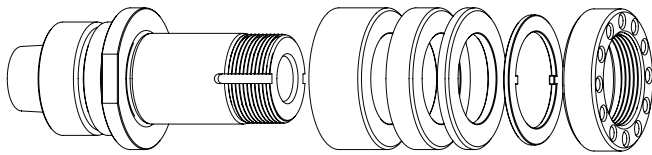
Order No.	Name	
350011020	Spacer ring $\varnothing 50$ x $\varnothing 20$ x 20	
350011010	Spacer ring $\varnothing 50$ x $\varnothing 20$ x 10	
350011004	Spacer ring $\varnothing 50$ x $\varnothing 20$ x 4	
350030010	Lock washer $\varnothing 50$ x $\varnothing 20$ x 2	
350020051	Clamping nut ANCA $\varnothing 50$ x 9,5 M20 x 1	
350020020	*Clamping nut with balancing option $\varnothing 50$ x 8,5 M20 x 1,0	

*related items

ANCA automatic HSK-F40 // Shaft $\varnothing 31,75$ mm (1¼) // RS $\varnothing 50$ mm

For ANCA tool grinding machines with ring set $\varnothing 50$ mm

GWA manual HSK-F40 // $\varnothing 32$ mm // RS $\varnothing 50$ mm



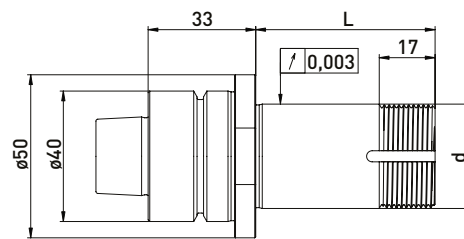
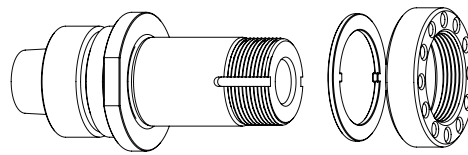
Delivered equipped:

Ring set $\varnothing 50$ mm, lock washer and and clamping nut ANCA balancing hole

Ring set $\varnothing 50$ mm

Order No.	HSK	d	L	B 20	B 10	B 4
300025112	HSK-F40	31,75	55	1	1	3
300025122	HSK-F40	31,75	72	2	1	2
300025132	HSK-F40	31,75	85	2	2	3
300025142	HSK-F40	31,75	95	3	1	3

GWA manual HSK-F40 // $\varnothing 32$ mm // without RS



Delivered equipped:

Lock washer and and clamping nut ANCA balancing hole

Order No.	HSK	d	L
300025111	HSK-F40	31,75	55
300025121	HSK-F40	31,75	72
300025131	HSK-F40	31,75	85
300025141	HSK-F40	31,75	95

Accessories ANCA grinding wheel adapter manual HSK-F40 // Shaft $\varnothing 20$ mm // Ring set $\varnothing 50$ mm

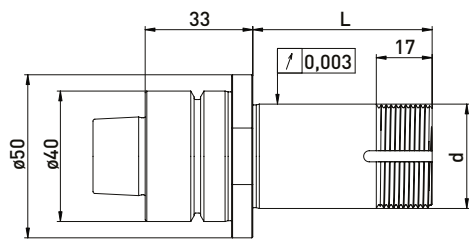
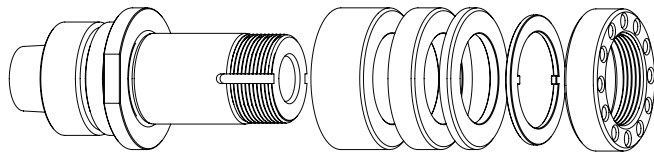
Order No.	Name	
350050010	Universal assembly device $\varnothing 50$	
350040030	Clamping nut wrench PC39 for ANCA nut	
350020027	*Balancing weight pair for clamping nut $\varnothing 47$ // 70gmm	

Order No.	Name	
350011120	Spacer ring $\varnothing 50$ x $\varnothing 31,75$ x 20	
350011110	Spacer ring $\varnothing 50$ x $\varnothing 31,75$ x 10	
350011104	Spacer ring $\varnothing 50$ x $\varnothing 31,75$ x 4	
350030040	Lock washer $\varnothing 43$ x $\varnothing 32$ x 2	
350020050	Clamping nut ANCA balancing hole $\varnothing 47$ x 12 M31,5 x 1,5	
350020026	*Clamping nut with balancing option $\varnothing 47$ x 12 M31,5 x 1,5	

ANCA automatic HSK-F40 // Shaft $\varnothing 32$ mm // RS $\varnothing 50$ mm

For ANCA tool grinding machines with ring set $\varnothing 50$ mm

GWA automatic HSK-F40 // $\varnothing 32$ mm // RS $\varnothing 50$ mm



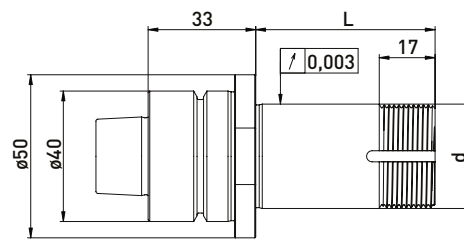
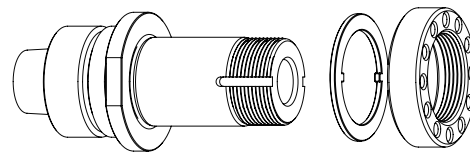
Delivered equipped:

Ring set $\varnothing 50$ mm, lock washer and clamping nut ANCA balancing hole

Ring set $\varnothing 50$ mm

Order No.	HSK	d	L	B 20	B 10	B 4
300025212	HSK-F40	32	55	1	1	3
300025222	HSK-F40	32	72	2	1	2
300025232	HSK-F40	32	85	2	2	3
300025242	HSK-F40	32	95	3	1	3

GWA automatic HSK-F40 // $\varnothing 32$ mm // without RS



Delivered equipped:

Lock washer and clamping nut ANCA balancing hole

Order No.	HSK	d	L
300025211	HSK-F40	32	55
300025221	HSK-F40	32	72
300025231	HSK-F40	32	85
300025241	HSK-F40	32	95

Accessories ANCA grinding wheel adapter automatic HSK-F40 // Shaft $\varnothing 32$ mm // Ring set $\varnothing 50$ mm

Order No.	Name	
350050010	Universal assembly device $\varnothing 50$	
350040030	Clamping nut wrench PC39 for ANCA nut	
350020027	*Balancing weight pair for clamping nut $\varnothing 47$ // 70gmm	

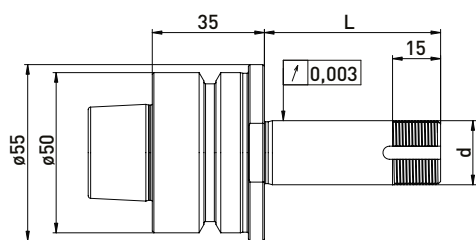
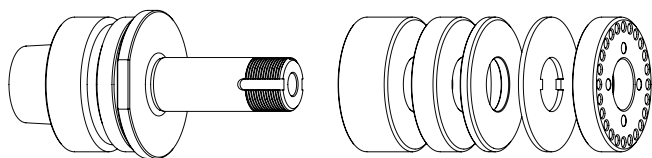
Order No.	Name	
350011220	Spacer ring $\varnothing 50 \times \varnothing 32 \times 20$	
350011210	Spacer ring $\varnothing 50 \times \varnothing 32 \times 10$	
350011204	Spacer ring $\varnothing 50 \times \varnothing 32 \times 4$	
350030040	Lock washer $\varnothing 43 \times \varnothing 32 \times 2$	
350020050	Clamping nut ANCA balancing hole $\varnothing 47 \times 12$ M31,5 x 1,5	
350020026	*Clamping nut with balancing option $\varnothing 47 \times 12$ M31,5 x 1,5	

*related items

ANCA automatic HSK-F50 // Shaft $\varnothing 20$ mm // RS $\varnothing 50$ mm

For ANCA tool grinding machines with ring set $\varnothing 50$ mm

GWA automatic HSK-F50 // $\varnothing 20$ mm // RS $\varnothing 50$ mm



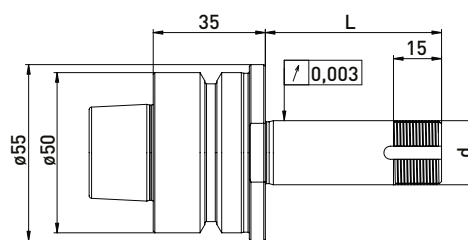
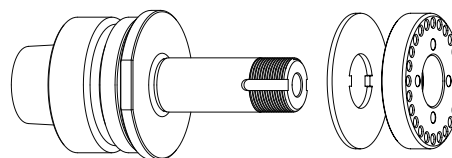
Delivered equipped:

Ring set $\varnothing 50$ mm, lock washer and clamping nut ANCA balancing hole

Ring set $\varnothing 50$ mm

Order No.	HSK	d	L	B 20	B 10	B 4
300024012	HSK-F50	20	55	1	1	3
300024022	HSK-F50	20	72	2	1	2
300024032	HSK-F50	20	85	2	2	3
300024042	HSK-F50	20	95	3	1	3

GWA automatic HSK-F50 // $\varnothing 20$ mm // without RS



Delivered equipped:

Lock washer and clamping nut ANCA balancing hole

Order No.	HSK	d	L
300024011	HSK-F50	20	55
300024021	HSK-F50	20	72
300024031	HSK-F50	20	85
300024041	HSK-F50	20	95

Accessories ANCA grinding wheel adapter automatic HSK-F50 // Shaft $\varnothing 20$ mm // Ring set $\varnothing 50$ mm

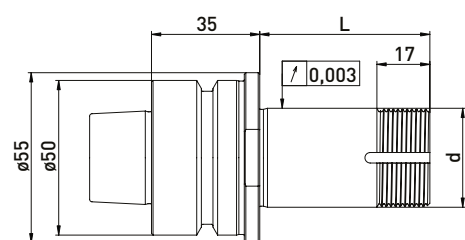
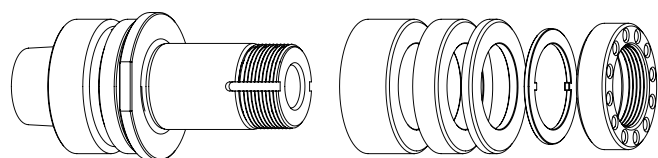
Order No.	Name	
350050010	Universal assembly device $\varnothing 50$	
350040010	*Clamping nut wrench PC27 for $\varnothing 20$	
350040011	*Clamping nut wrench PC27 for $\varnothing 20$	
350020021	*Balancing weight pair for clamping nut $\varnothing 50$ // 100gmm	

Order No.	Name	
350011020	Spacer ring $\varnothing 50 \times \varnothing 20 \times 20$	
350011010	Spacer ring $\varnothing 50 \times \varnothing 20 \times 10$	
350011004	Spacer ring $\varnothing 50 \times \varnothing 20 \times 4$	
350030010	Lock washer $\varnothing 50 \times \varnothing 20 \times 2$	
350020051	Clamping nut ANCA $\varnothing 50 \times 9,5$ M20 x 1	
350020020	*Clamping nut with balancing option $\varnothing 50 \times 8,5$ M20 x 1,0 PC27	

ANCA automatic HSK-F50 // Shaft $\varnothing 31,75$ mm (1¼) // RS $\varnothing 50$ mm

For ANCA tool grinding machines with ring set $\varnothing 50$ mm

GWA automatic HSK-F50 // $\varnothing 31,75$ mm (1¼) // RS $\varnothing 50$ mm



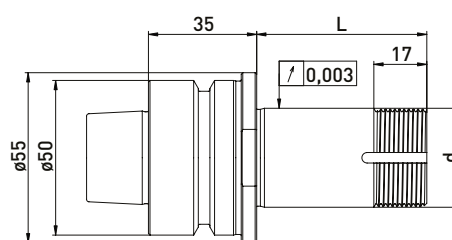
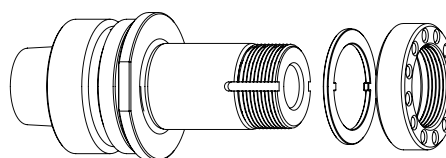
Delivered equipped:

Ring set $\varnothing 50$ mm, lock washer and clamping nut ANCA balancing hole

Ring set $\varnothing 50$ mm

Order No.	HSK	d	L	B 20	B 10	B 4
300024112	HSK-F50	31,75	55	1	1	3
300024122	HSK-F50	31,75	72	2	1	2
300024132	HSK-F50	31,75	85	2	2	3
300024142	HSK-F50	31,75	95	3	1	3

GWA automatic HSK-F50 // $\varnothing 31,75$ mm // without RS



Delivered equipped:

Lock washer and clamping nut ANCA balancing hole

Order No.	HSK	d	L
300024111	HSK-F50	31,75	55
300024121	HSK-F50	31,75	72
300024131	HSK-F50	31,75	85
300024141	HSK-F50	31,75	95

Accessories ANCA grinding wheel adapter automatic HSK-F50 // Shaft $\varnothing 31,75$ mm (1¼) // Ring set $\varnothing 50$ mm

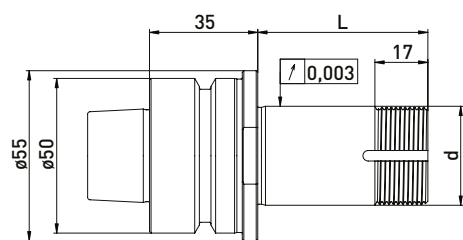
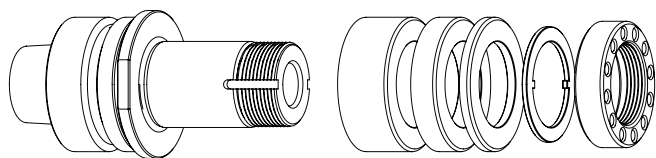
Order No.	Name	
350050010	Universal assembly device $\varnothing 50$	
350040030	Clamping nut wrench PC39 for ANCA nut	
350020027	*Balancing weight pair for clamping nut $\varnothing 47$ // 70gmm	

Order No.	Name	
350011120	Spacer ring $\varnothing 50$ x $\varnothing 31,75$ x 20	
350011110	Spacer ring $\varnothing 50$ x $\varnothing 31,75$ x 10	
350011104	Spacer ring $\varnothing 50$ x $\varnothing 31,75$ x 4	
350030040	Lock washer $\varnothing 43$ x $\varnothing 32$ x 2	
350020050	Clamping nut ANCA $\varnothing 47$ x 12 M31,5x1,5	
350020026	*Clamping nut with balancing option $\varnothing 47$ x 12 M31,5 x 1,5	

ANCA automatic HSK-F50 // Shaft $\varnothing 32$ mm // RS $\varnothing 50$ mm

For ANCA tool grinding machines with ring set $\varnothing 50$ mm

GWA automatic HSK-F50 // $\varnothing 32$ mm // RS $\varnothing 50$ mm



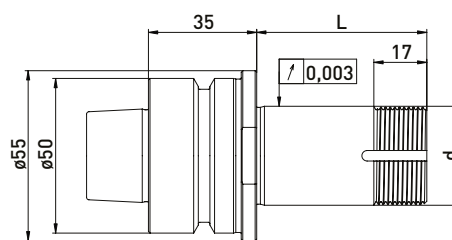
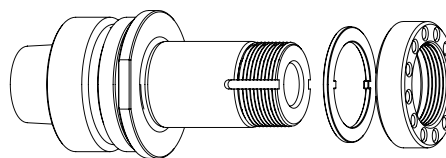
Delivered equipped:

Ring set $\varnothing 50$ mm, lock washer and clamping nut ANCA balancing hole

Ring set $\varnothing 50$ mm

Order No.	HSK	d	L	B 20	B 10	B 4
300024212	HSK-F50	32	55	1	1	3
300024222	HSK-F50	32	72	2	1	2
300024232	HSK-F50	32	85	2	2	3
300024242	HSK-F50	32	95	3	1	3

GWA automatic HSK-F50 // $\varnothing 32$ mm // without RS



Delivered equipped:

Lock washer and clamping nut ANCA balancing hole

Order No.	HSK	d	L
300024211	HSK-F50	32	55
300024221	HSK-F50	32	72
300024231	HSK-F50	32	85
300024241	HSK-F50	32	95

Accessories ANCA grinding wheel adapter automatic HSK-F50 // Shaft $\varnothing 32$ mm // Ring set $\varnothing 50$ mm

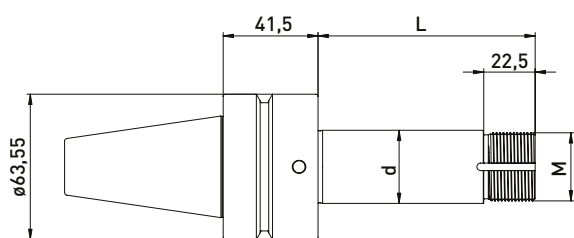
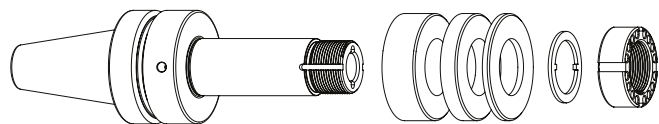
Order No.	Name	
350050010	Universal assembly device $\varnothing 50$	
350040030	Clamping nut wrench PC39 for ANCA nut	
350020027	*Balancing weight pair for clamping nut $\varnothing 47$ // 70gmm	

Order No.	Name	
350011220	Spacer ring $\varnothing 50$ x $\varnothing 32$ x 20	
350011210	Spacer ring $\varnothing 50$ x $\varnothing 32$ x 10	
350011204	Spacer ring $\varnothing 50$ x $\varnothing 32$ x 4	
350030040	Lock washer $\varnothing 43$ x $\varnothing 32$ x 2	
350020050	Clamping nut ANCA balancing hole $\varnothing 47$ x 12 M31,5 x 1,5	
350020026	*Clamping nut with balancing option $\varnothing 47$ x 12 M31,5 x 1,5	

ANCA similar SK40 with flat contact face

For ANCA tool grinding machines

GWA similar SK40 with flat contact face



Delivered equipped:

Ring set, lock washer and clamping nut with balancing option

Order No.	Fine thread	d	L	Ring set		
				B 20	B 10	B 4
300026052	M20 x 1,5	20	95	2	2	4
300026152	M30 x 1,5	31,75	95	2	2	4
300026252	M30 x 1,5	32	95	2	2	4
300026952	M50 x 1,5	50,8	95	2	2	4

Accessories GWA similar SK40 with flat contact face

Order No.	Name	
350011020	Spacer ring $\phi 50 \times \phi 20 \times 20$	
350011010	Spacer ring $\phi 50 \times \phi 20 \times 10$	
350011004	Spacer ring $\phi 50 \times \phi 20 \times 4$	
350011420	Spacer ring $\phi 60 \times \phi 31,75 \times 20$	
350011410	Spacer ring $\phi 60 \times \phi 31,75 \times 10$	
350011404	Spacer ring $\phi 60 \times \phi 31,75 \times 4$	
350011320	Spacer ring $\phi 60 \times \phi 32 \times 20$	
350011310	Spacer ring $\phi 60 \times \phi 32 \times 10$	
350011304	Spacer ring $\phi 60 \times \phi 32 \times 4$	
250000549	Spacer ring $\phi 75 \times \phi 50,8 \times 20$	
250000548	Spacer ring $\phi 75 \times \phi 50,8 \times 10$	
250000547	Spacer ring $\phi 75 \times \phi 50,8 \times 4$	

Accessories ANCA grinding wheel adapter similar SK40 with flat contact face

Order No.	Name	
250000552	Lock washer $\phi 37 \times \phi 20 \times 2$	
250000940	Lock washer $\phi 40 \times \phi 30 \times 2$	
250000550	Lock washer $\phi 64 \times \phi 50,2 \times 2$	

Order No.	Name	
250000553	Clamping nut with balancing option $\phi 40 \times 17$ M20 x 1,5	
250000485	Clamping nut with balancing option $\phi 45 \times 17$ M30 x1,5	
250000551	Clamping nut with balancing option $\phi 70 \times 19$ M50x1,5	
350300131	Hook wrench 40-42 mm	
350300132	Hook wrench 45-50 mm	
350300133	Hook wrench 68-75 mm	

*related items